

# ROAD ACCIDENT SITUATION

IN  
THAILAND  
2020

17,831

17,831 people lost their lives on the roads in 2020.

29.5

In every 30 minutes, at least one person dies by road accident.

73.8%

More than three-fourths (73.8%) of victims were motorcyclist.

27.2

The road traffic death rate is 27.2 per 100,000 population.

15-24

The highest proportion of victims were among 15-24 years old. It shared about one-fourths.



Synthesize the findings from Thailand National Status Report for Road Safety 2020 and the integrated information from many (useful) sources that reflect the situation of road accidents in Thailand

## 01

There is a possibility that the number of fatalities from road accidents in Thailand will decrease. However, it must be known that apart from the cooperation of national and international stakeholders from a variety of sectors, preventive measures implemented to limit the outbreak of COVID-19 has also had a significant impact in reducing fatalities.

## 02

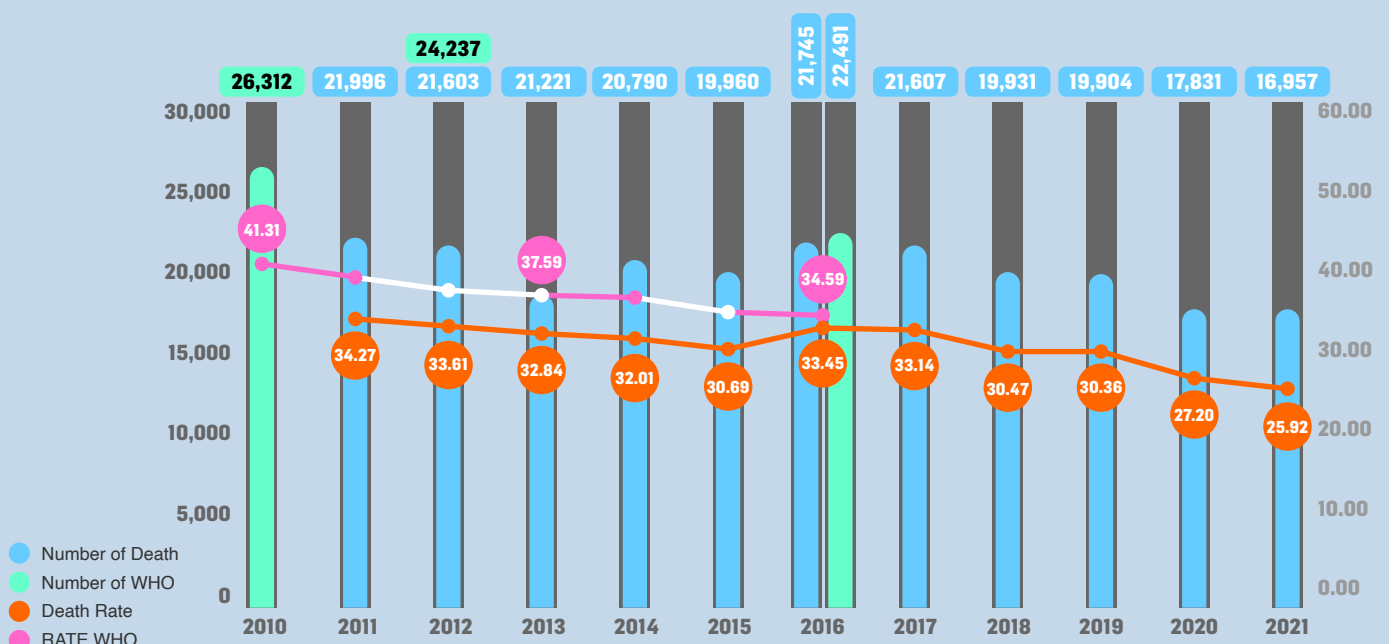
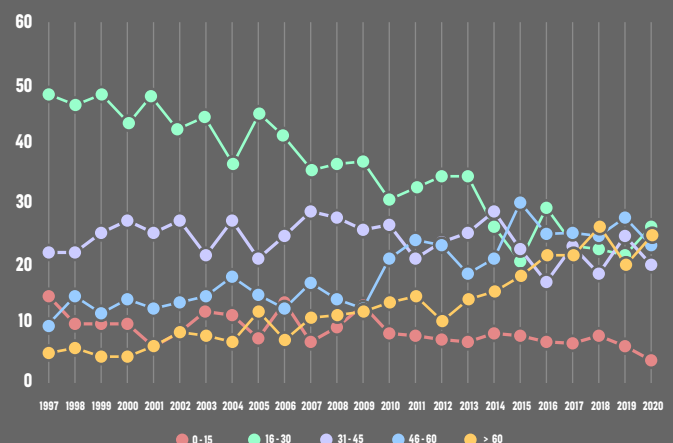
Although, there is a decrease in mortality, the loss from road accidents in Thailand is still at an elevated level with 17,831 deaths (27.2 per 100,000 population), or 49 deaths a day, or about 2 deaths per hour.

## 03

It has been observed that the mortality rate proportion in the age group 16-30 years, which has the highest mortality rate, is steadily decreasing. Whereas the proportion of people aged 46-60 years and over 60 years old has increased. Over 60-year-olds have a high mortality rate, while other age groups' mortality rates have decreased. The implication of this information is that, while 70 percent of road accidents occur in people aged of 16

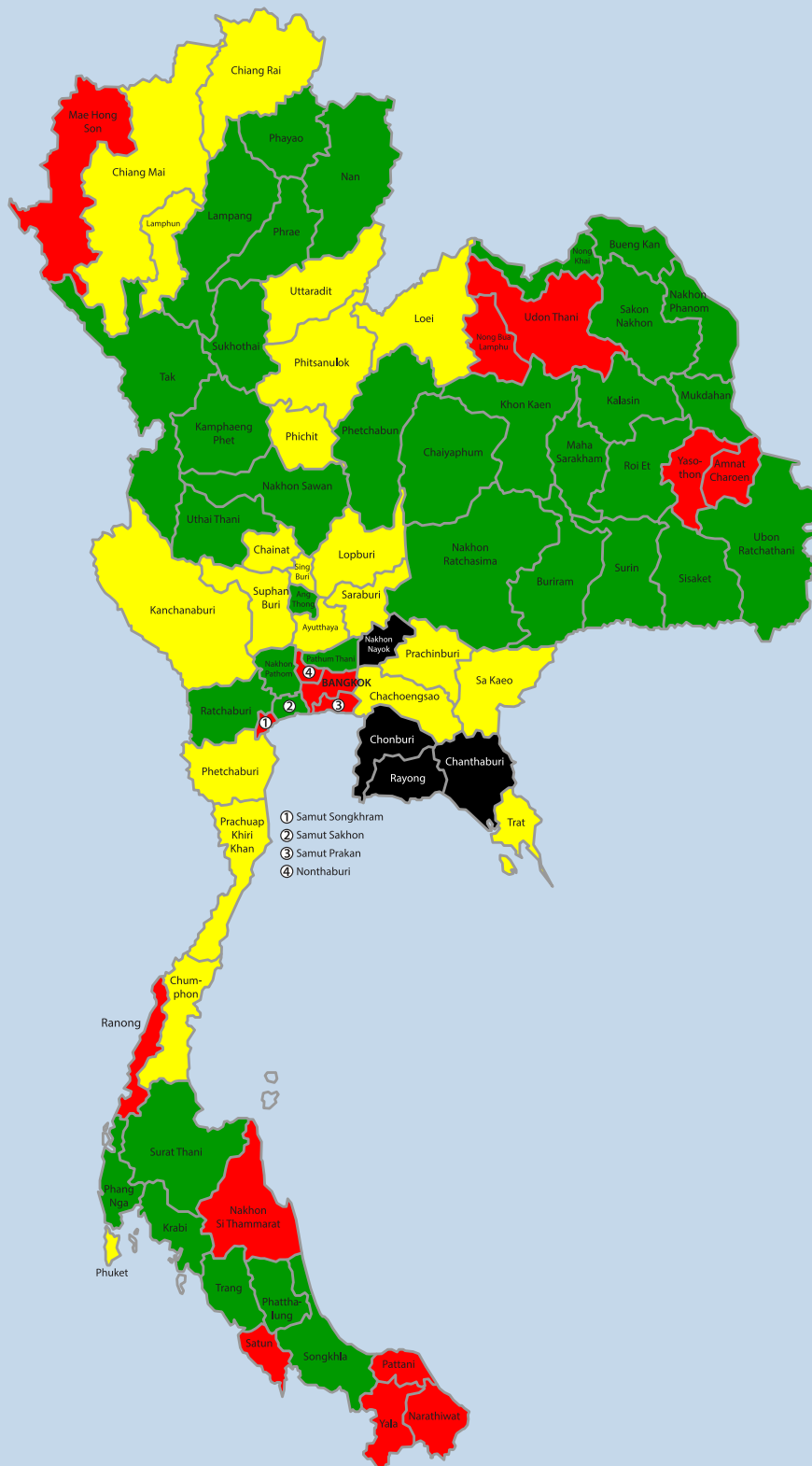
### Percentage of RTI fatality

by age group 1997 - 2020 in KKH



The number and mortality rate of road accidents in Thailand, 2011-2021

# The mortality rate per 100,000 population, 2020



and 60 who are of working age, road accidents among the elderly are on the rise. It is in line with Thailand's aging society. The elderly injured in road accidents have a higher mortality rate than other age groups. In the past, elderly injuries in road accidents were not a major issue. Because there were not many cases, and it does not happen often to the elderly, we need to reconsider this issue in order to seriously determine measures to prevent accidents involving the elderly.

## 04

Ten provinces with the highest mortality rate per 100,000 population is: Rayong, Nakhon Nayok, Chanthaburi, Chonburi, Chainat, Prachinburi, Saraburi, Prachuap Khiri Khan, Lamphun, Suphanburi

AGE	NO. OF INJURED (Include Deaths – person)	NO. OF DEAD	%
0-15	1,024	8	0.8
16-30	3,654	54	1.8
31-45	1,791	40	2.2
46-60	1,370	47	3.4
>60	820	50	6.1

## 05

Ten provinces with the lowest mortality rate per 100,000 population is: Amnat Charoen, Yala, Bangkok, Satun, Pattani, Narathiwat, Mae Hong Son, Samut Songkhram, Nonthaburi, Udon Thani.

## 06

There are 18 provinces with mortality rates increased and 58 provinces with mortality rates decreased when comparing to the 5th report of 2018.

The top 5 provinces with the highest mortality rate have increased: Nakhon Nayok, Sing Buri, Pattani, Sukhothai, and Yala.

The top 5 provinces with the highest mortality rate have decreased: Phang Nga, Nakhon Pathom, Yasothon, Phuket, and Krabi.

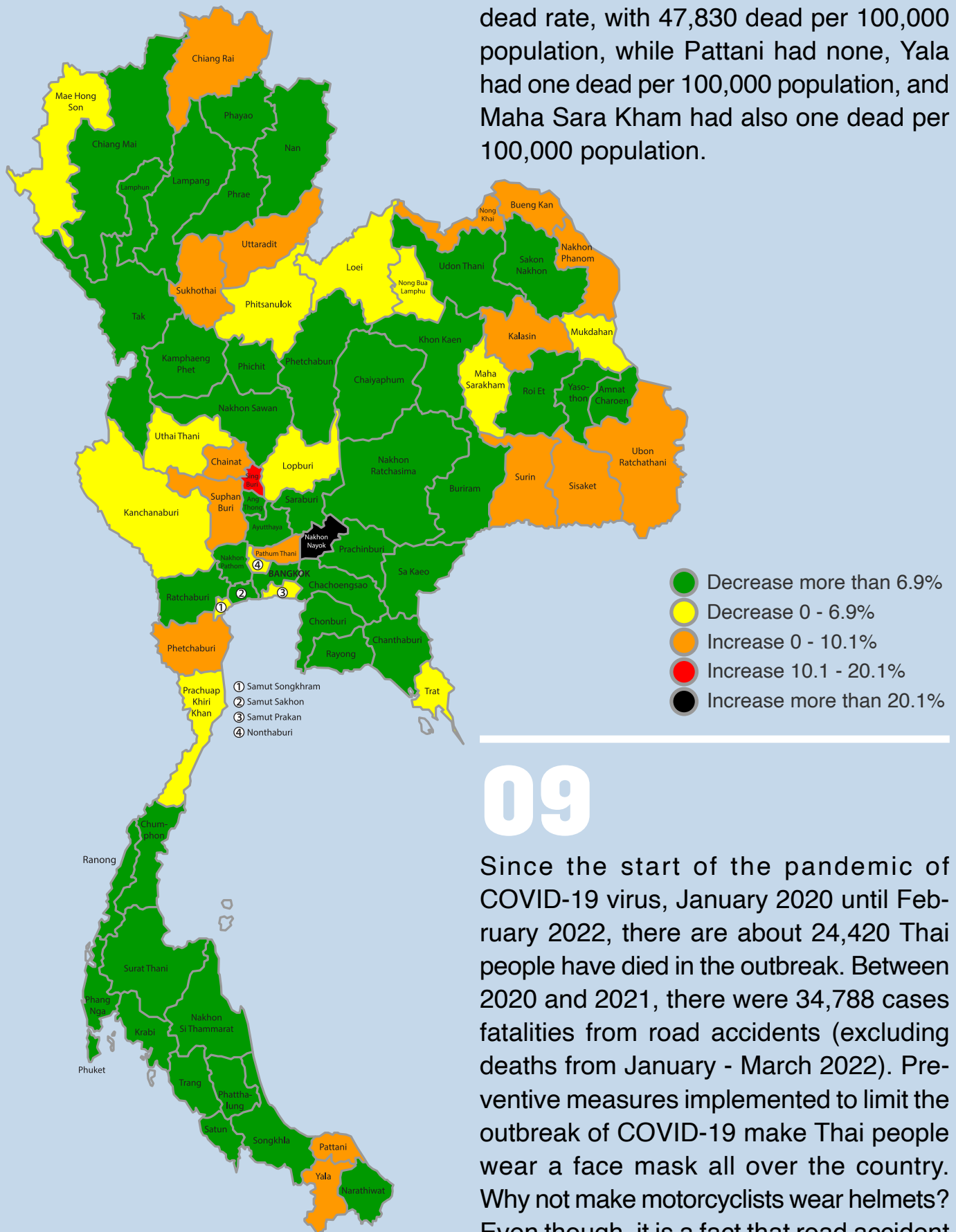
## 07

For the past ten years, most deaths have been motorcyclists (about 74% of all road accident deaths). The IHPP reported in 2021 that if every rider and every motorcycle passenger wore a helmet (100%), the overall of deaths will be reduced by 36%, which means that the number of deaths will be reduced to 5000 people in that year. However, if we use the same procedure of road accident campaign, we most likely cannot make 100% of the motorcyclists and motorcycle passengers wear a helmet. Therefore, it is the challenge of the relevant departments to seriously consider and seek for new methods to solve this problem.

## 08

Another significant problem in resolving traffic incidents is in regard to law enforcement. The report states that each province has a highly distinct rate of arrests for risky behavior. For instance,

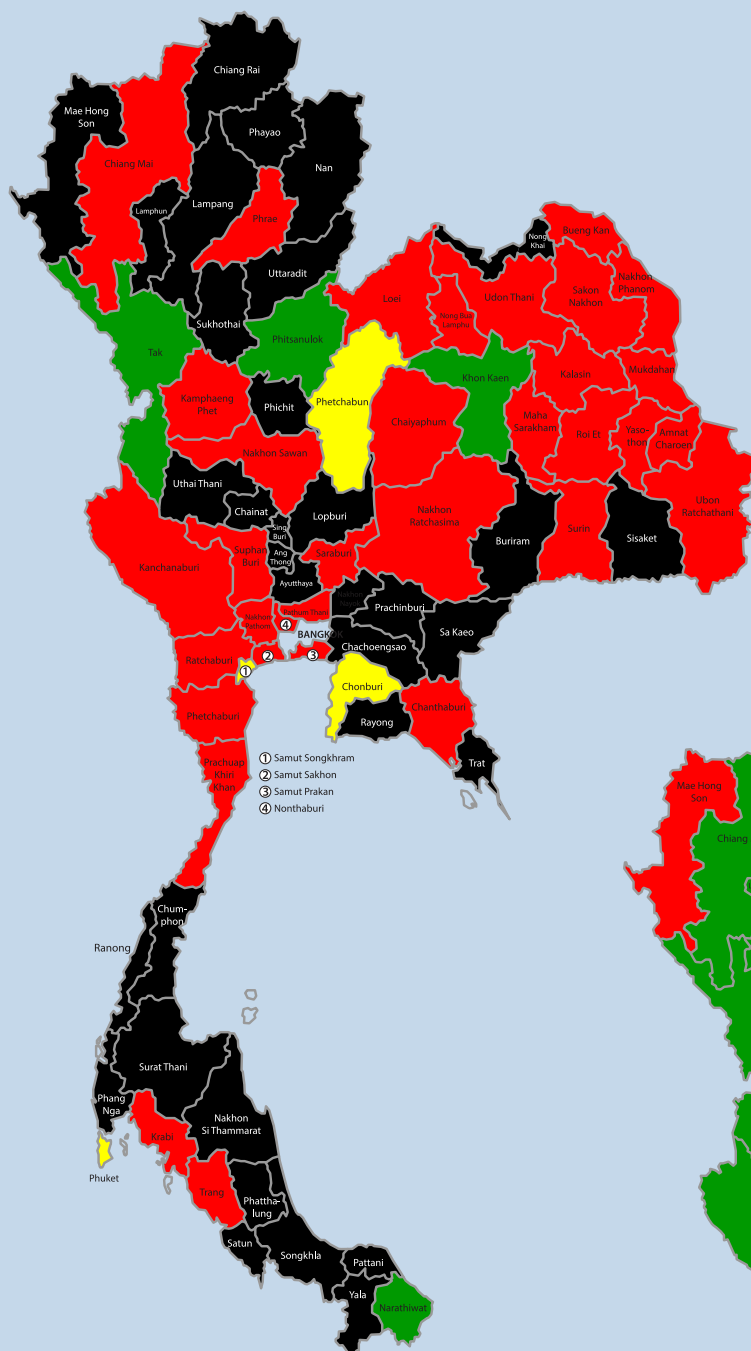
in cases of drunk driving. Tak had the highest rate of dead, at 5521 per 100,000 population, while there were no dead reported in Pattani or Lopburi. Tak had the highest dead rate, with 47,830 dead per 100,000 population, while Pattani had none, Yala had one dead per 100,000 population, and Maha Sara Kham had also one dead per 100,000 population.



## 09

Since the start of the pandemic of COVID-19 virus, January 2020 until February 2022, there are about 24,420 Thai people have died in the outbreak. Between 2020 and 2021, there were 34,788 cases fatalities from road accidents (excluding deaths from January - March 2022). Preventive measures implemented to limit the outbreak of COVID-19 make Thai people wear a face mask all over the country. Why not make motorcyclists wear helmets? Even though, it is a fact that road accident causes more casualties than COVID-19.

## Drunk-driving the dead case



## Motorcycle helmet use the dead case

